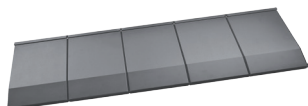


Quadro by Icopal

Technical Product Data



Pitch

Minimal pitch	15°
Maximal pitch	90°

Dimensions

Size of tile - overall (w x h)	1293mm x 419mm
Size of tile - cover (w x h)	1250mm x 399mm
Coverage	0,5 m ² per element (2 elements per m ²)
Thickness steel	0,75mm
Type of steel + composition	ZM250 g/m ²

Weight

Weight per element	3,6 kg
Weight per m ²	7,2 kg

Fixings (Icopal fixing recommended)

Fixings per element	3 pieces (6 per m ²)
---------------------	----------------------------------

Battens

Batten distance	399mm (double battening: 174 & 225mm)
Center distance battens (max.)	Minimal batten thickness (recommended)
600mm	38mm x 30mm (h x w)
900mm	50mm x 30mm (h x w)
1200mm	50mm x 50mm (h x w)

Usage

See installation guide

Weather resistance

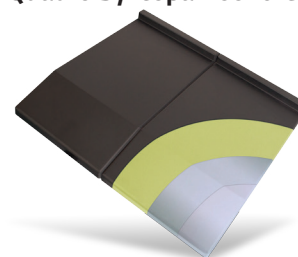
UV-resistant	Colourfast by Qualicoat Class 2
Noise (directly under the roof during heavy rain)	Li = 70 dB





Package

Elements per pallet	0,75mm steel 200 elements
---------------------	------------------------------

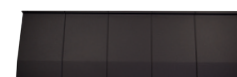
Composition

Quadro by Icopal roof tile



-  Extra durable Qualicoat Class 2 coating toplayer
-  Polyurethane primer
-  ZM250 g/m² steel
-  Polyurethane primer

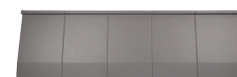
Colours



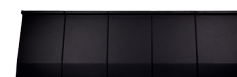
Graphite (31)



Brick (35)



Mole Grey (41)



Black (71)